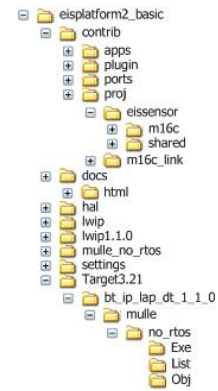
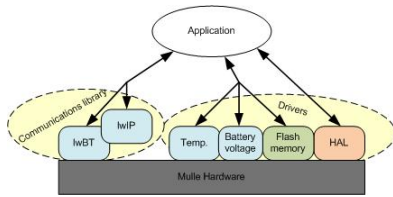
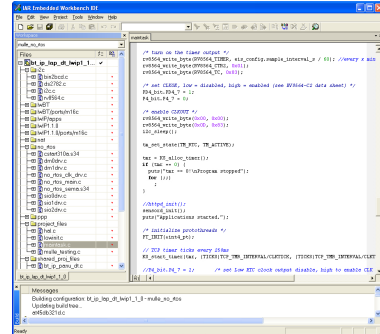
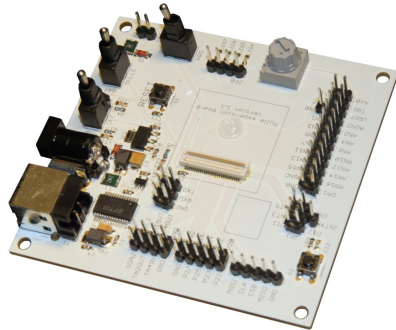


Mulle Quick Start Guide



© 2010 Eistec AB

All rights reserved. Subject to change without prior notice.

Document version 1.03

1 GETTING STARTED

Make sure you have the following items available:

1.1.1 Necessary Hardware

- The Mulle Platform.
- The Mulle Expansion Board and a USB cable.
- A PC or Mac used as development host.

1.1.2 Necessary Software

- The Mulle Software, available from the Mulle SVN repository, or in a zipped archive from the web page of Eistec AB. [Link](#)
- The GNU C Compiler for M16C, and suitable C development tools or a complete IDE, for example Eclipse or HEW. A precompiled, suitable GNU C compiler with setup instructions is available from the web page of Eistec AB. [Link](#)
- M16C flasher (if using Windows), available from their German website. [Link](#)
- Or, (if using Linux,) sm16cf, available from Sourceforge. [Link](#)

1.1.3 Necessary documentation

- First, read the guide on how to setup the software development tools. See the paragraph above.
- To understand the code architecture, and to work with the Mulle software, read the Source Code Management document. [Link](#)
- Read the Mulle Expansion Board Manual, where it is thoroughly explained how to install the software necessary to communicate between the development host and the Mulle Platform. Follow all the steps and make sure that your setup works before continuing. [Link](#)
- Next, it could be a good idea to read the Mulle Hardware Guide [Link](#), in order to understand the logics behind the Mulle Platform. This document is an overview, and not version specific.
- For more information about a specific version of the Mulle Platform, please read the documentation on the Eistec web site instead. Choose your specific version and click on the different parts to find out more about them. [Link](#)
- The Mulle Developers Forum Wiki is an important resource where many programming questions are answered. [Link](#)
- For a number of tutorials on the Mulle Software, please refer to the Luleå University of Technology web site, where a number of tutorials developed by LTU deal with different aspects of the Mulle Software. [Link](#)

1.1.4 Further Reading

More information about the Mulle Platform and its software can be found in the following publications:

- Doctoral thesis: Low-power Design Methodologies for Embedded Internet Systems. [Link](#)
- Press release: Renesas support the Mulle Platform. [Link](#)
- Swedish “Elektroniktidningen” writes about the Mulle Platform. [Link](#)
- Several scientific articles treat the Mulle Platform. [Link](#)

2 MULLE DOCUMENTATION

The Mulle documentation is laid out as seen in the figure below.

